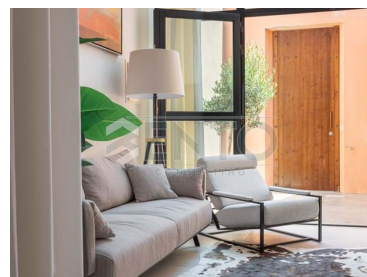
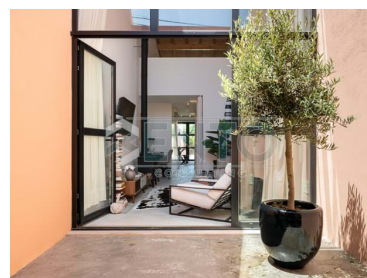




## Peniche - Townhouse



 1	 1	 50	 100	<b>172 500 €</b>
Bedrooms	Bathrooms	Area (m <sup>2</sup> )	Land Area (m <sup>2</sup> )	(EUR €)

### LOFT WITH GARDEN AT 500M FROM THE BEACH

The loft created in open space consists in a living room with office, an exquisite bathroom with Italian shower, a modern kitchen open to the garden and terrace.

Great attention was paid to the level of the cover with insulations of 15cm and the frames with thermal cut. Lighting and ventilation are guaranteed through large spans.

This 50 m<sup>2</sup> loft is located ground floor and has a fully open layout, which makes the most of the light.

With regard to utility supplies, they are all newly installed and include excellent finishes and equipment. For added comfort and energy savings, it includes a cylinder system for the production of sanitary hot water and for the hot/cold air conditioning system of A/C and fireplace.

T 961448763 <sup>2</sup> · T 967940546 <sup>2</sup> · E [info@bentoconsulting.pt](mailto:info@bentoconsulting.pt)  
AMI 23690

<sup>1</sup> (Call to national fixed network) | <sup>2</sup> (Call to national mobile network)



The villa is sold fully equipped.

## Property Features

- Heating
- Dishwashing machine
- Fireplace
- Thermoaccumulator
- Garden
- Furnished
- Double glazing
- Main drainage
- Quiet Location
- Barbecue
- Uninterrupted views
- Mains water
- Washing machine
- Air conditioning
- Equipped kitchen
- Proximity: Beach, Shopping, Restaurants, Hospital, Pharmacy, Public Transport, Schools, Public Swimming Pools, Playground
- Terrace
- Views: City view, Garden view
- Pantry
- Walking distance to beach
- Closed fireplace
- Sealed land area
- Energetic certification: Exempt
- Renovation year: 2021

**T 961448763 <sup>2</sup> · T 967940546 <sup>2</sup> · E [info@bentoconsulting.pt](mailto:info@bentoconsulting.pt)**  
**AMI 23690**

<sup>1</sup> (Call to national fixed network) | <sup>2</sup> (Call to national mobile network)