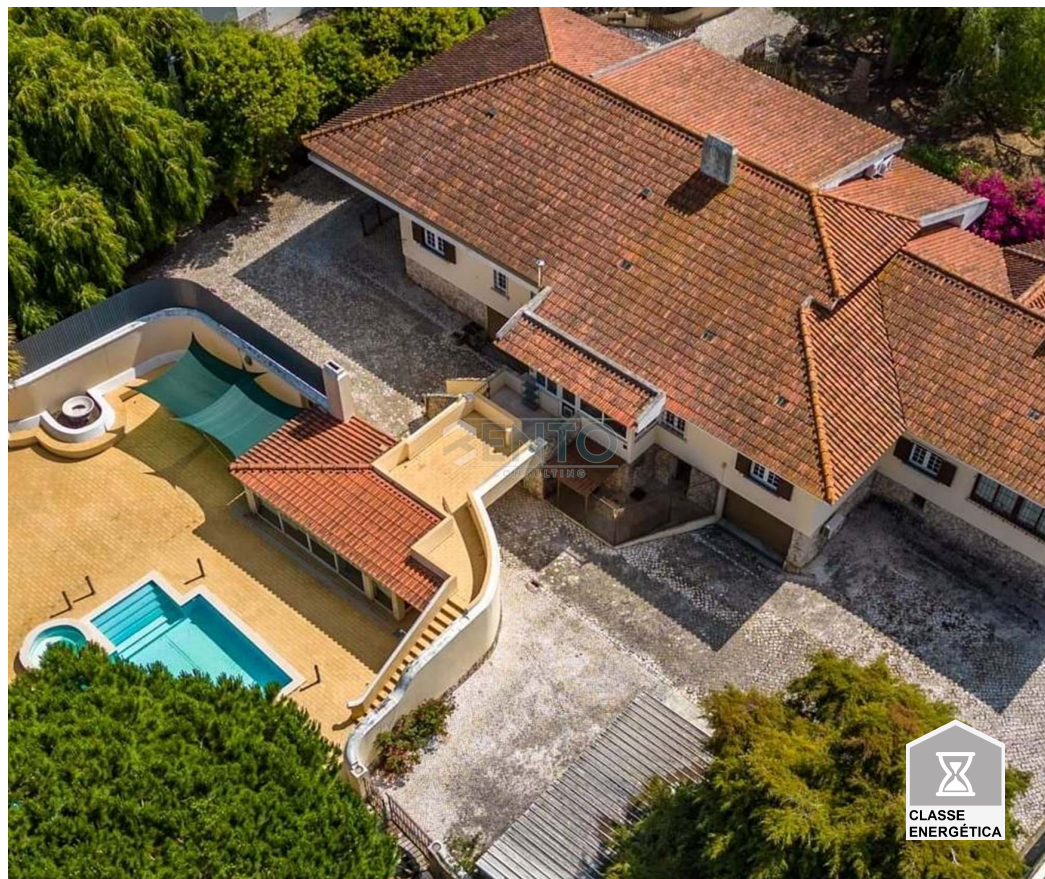





Caldas da Rainha - Nossa Senhora do Pópulo, Coto e São Gregório - Villa



 10
Bedrooms

 7
Bathrooms

 602
Area (m²)

 3026
Land Area (m²)


Garage


Swimming Pool

2 250 000 €
(EUR €)

Prestigious Mansion of 600m2 in the center of Caldas da Rainha!

Sensational Secluded Mansion with 3 levels, which provides you with a well-being and a unique and exclusive tranquility by the surroundings that makes you a Property of excellence in the center of Caldas da Rainha!

This prestigious property of 600m2 inserted in a plot of land with 3000m2 fenced and with total privacy, has an abundant wonderful vegetation, fruit trees, swimming pool, annex for visits, leisure and convivial areas, external box's, all this with a Fantastic sun exposure.

Counting on 3 suites and 7 bedrooms with excellent areas, fully equipped and functional kitchen, sublime living room with 80m2 with fireplace, offices with direct access to the terraces, gym, closet,

T 961448763 ² · T 967940546 ² · E info@bentoconsulting.pt
AMI 23690

¹ (Call to national fixed network) | ² (Call to national mobile network)



laundry, wine cellar, workshop, garage for several cars and attached areas.

The entire Mansion is surrounded by fantastic balconies and terraces ideals for your meals or for an outdoor work session with total privacy.

In the fenced plot of 3000m2 there is also the possibility of building 2 more villas with independent access!

Book your visit now!

Property Features

- Pool
- Garden
- Garage
- Floors: 3
- Laundry
- Wine cellar
- Storage / utility room
- Frontline property
- Security alarm
- Double glazing
- Quiet Location
- Parking space
- Sealed land area
- Uninterrupted views
- Balcony
- Proximity: Shopping, Restaurants, City, Hospital, Public Transport, Schools
- Terrace
- Built year: 1981
- Private condominium
- Drive way
- Basement
- Views: Pool view, Garden view
- Video entry system
- Guest cottage
- Attic
- Central location
- Barbecue
- Domotics
- Energetic certification: In process

T 961448763 ² · T 967940546 ² · E info@bentoconsulting.pt
AMI 23690

¹ (Call to national fixed network) | ² (Call to national mobile network)